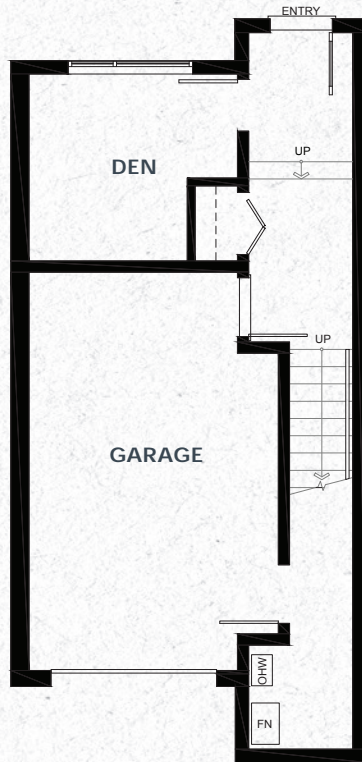
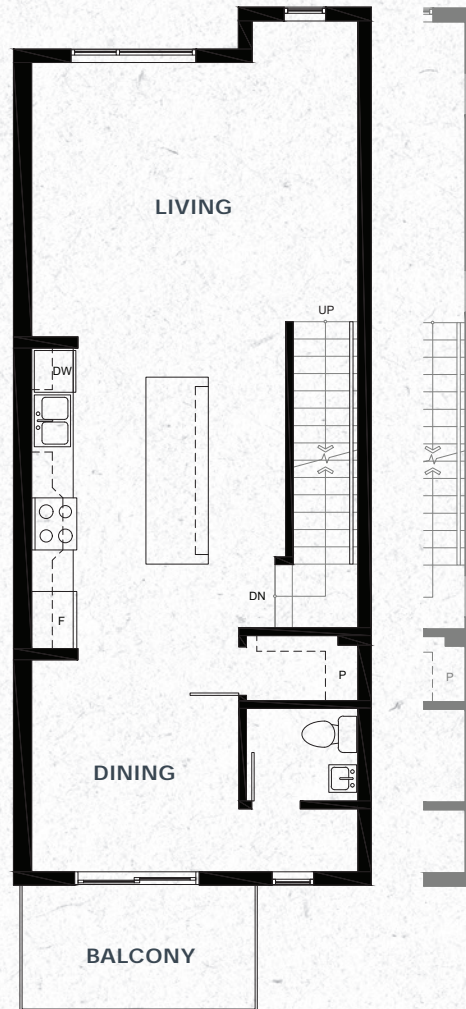


PLAN A

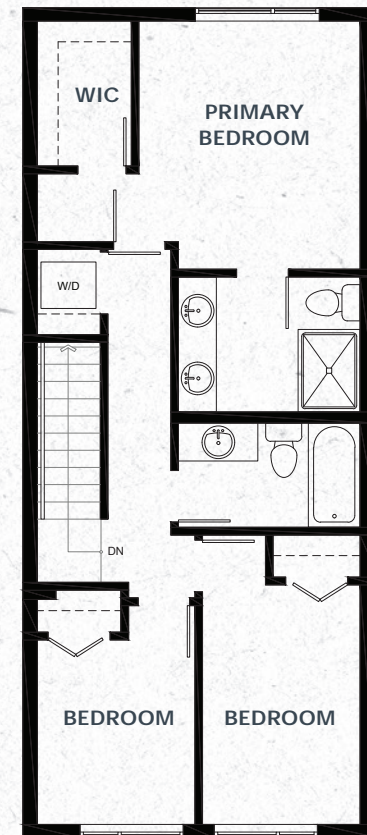
3 BED + DEN, 2.5 BATH
1,616 sq ft.



LOWER



MAIN



UPPER

Please note units 18,19,20 & 21 all feature sunken living rooms. Please ask our Sales Team for more information.

In our continuing effort to improve and maintain the high standard of the Westminster Plateau development, the developer reserves the right to modify or change plans, specifications, features and prices without notice. Materials may be substituted with equivalent or better at the developer's sole discretion. All dimensions and sizes are approximate and are based on Architectural measurements. If exact sizing is material to your purchase, please refer to the survey plans in the disclosure statement for exact measurements. As reverse and/or mirrored plans occur throughout the development, please see architectural plans. Renderings are an artist's conception and are intended as a general reference only. Please refer to disclosure statement for specific offering details. E.&O.E. Sales and Marketing provided by Fifth Avenue Real Estate Marketing Ltd. 604-583-2212

PLAN B

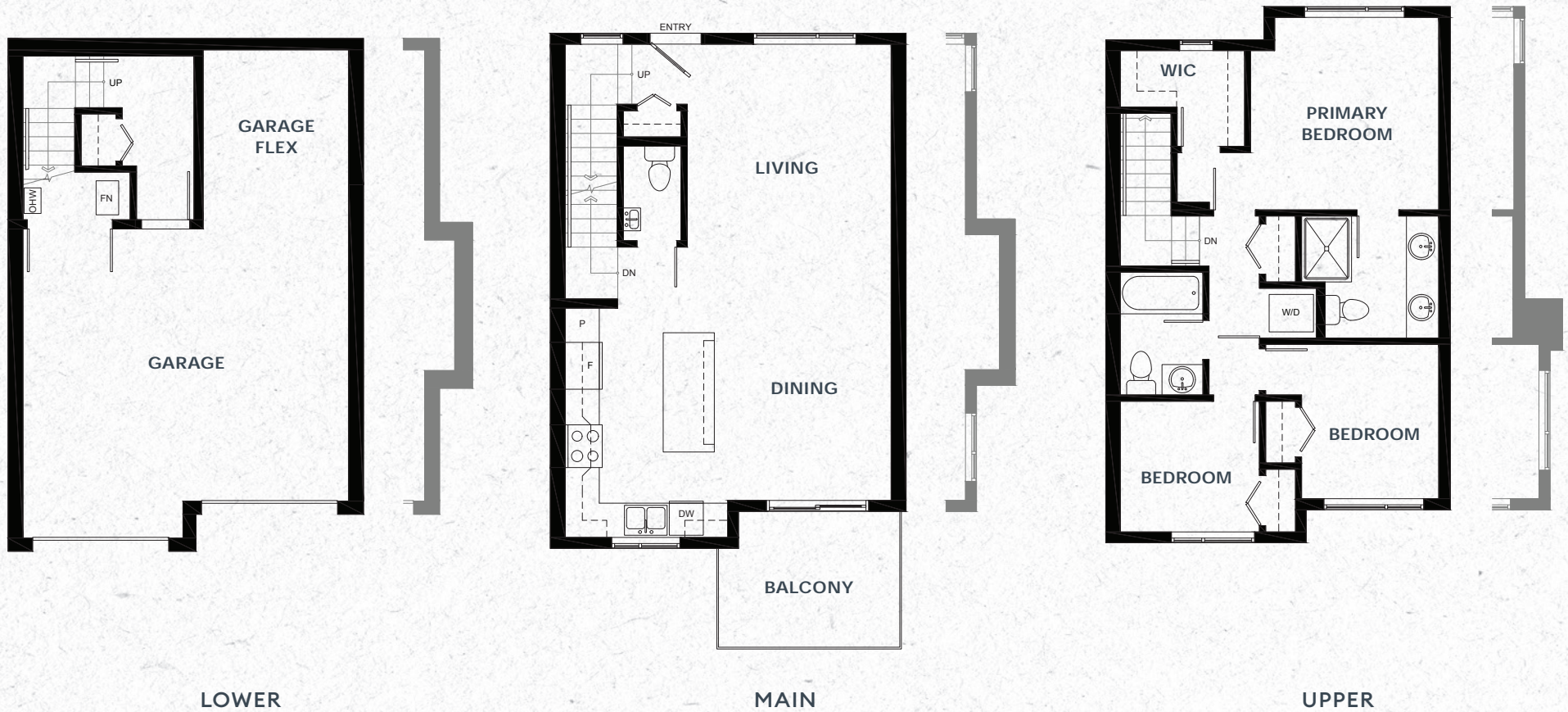
3 BED + DEN, 2.5 BATH
1,570 - 1,612 sq ft.



In our continuing effort to improve and maintain the high standard of the Westminster Plateau development, the developer reserves the right to modify or change plans, specifications, features and prices without notice. Materials may be substituted with equivalent or better at the developer's sole discretion. All dimensions and sizes are approximate and are based on Architectural measurements. If exact sizing is material to your purchase, please refer to the survey plans in the disclosure statement for exact measurements. As reverse and/or mirrored plans occur throughout the development, please see architectural plans. Renderings are an artist's conception and are intended as a general reference only. Please refer to disclosure statement for specific offering details. E.&O.E. Sales and Marketing provided by Fifth Avenue Real Estate Marketing Ltd. 604-583-2212

PLAN E

3 BED, 2.5 BATH
1,301 - 1,333 sq ft.



In our continuing effort to improve and maintain the high standard of the Westminster Plateau development, the developer reserves the right to modify or change plans, specifications, features and prices without notice. Materials may be substituted with equivalent or better at the developer's sole discretion. All dimensions and sizes are approximate and are based on Architectural measurements. If exact sizing is material to your purchase, please refer to the survey plans in the disclosure statement for exact measurements. As reverse and/or mirrored plans occur throughout the development, please see architectural plans. Renderings are an artist's conception and are intended as a general reference only. Please refer to disclosure statement for specific offering details. E.&O.E. Sales and Marketing provided by Fifth Avenue Real Estate Marketing Ltd. 604-583-2212

