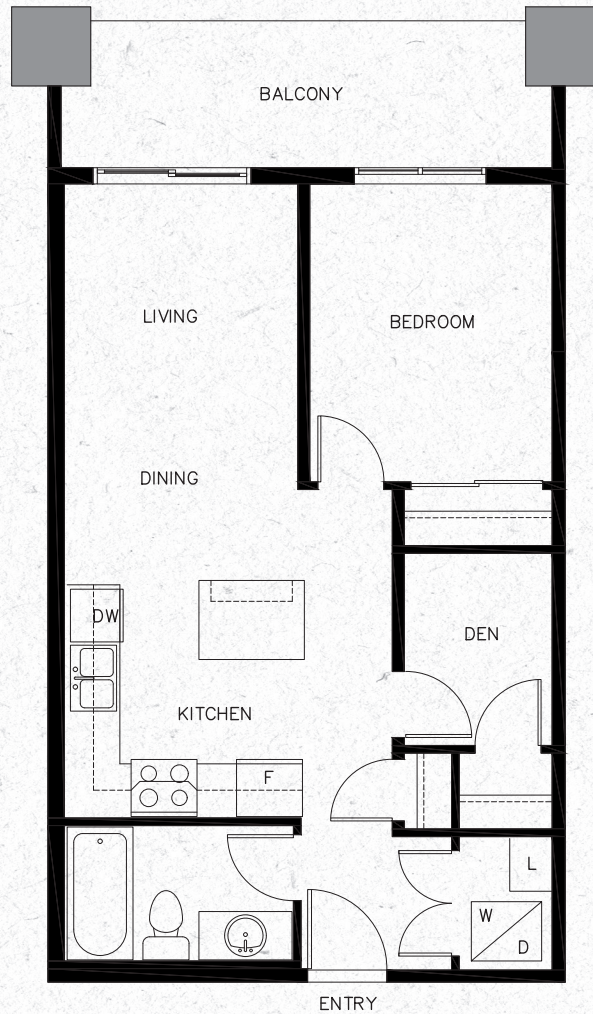
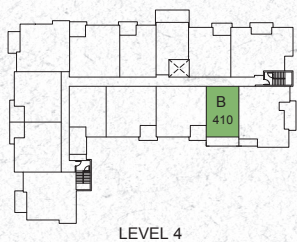
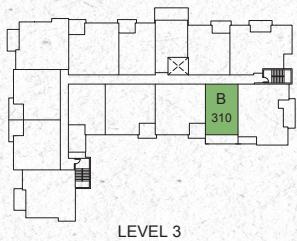
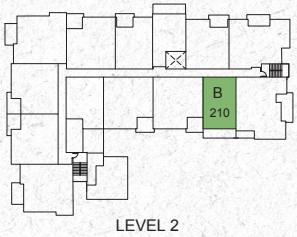
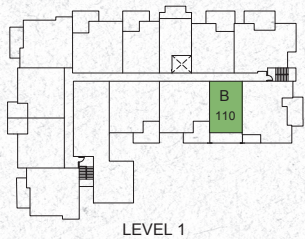


# PLAN B

1 BED + DEN, 1 BATH  
601 sq ft.

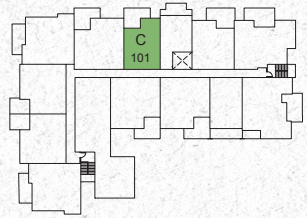


Balcony configurations may vary. Please see sales representative for further details. In our continuing effort to improve and maintain the high standard of the Westminster Plateau development, the developer reserves the right to modify or change plans, specifications, features and prices without notice. Materials may be substituted with equivalent or better at the developer's sole discretion. All dimensions and sizes are approximate and are based on architectural measurements. As reverse, flipped, and/or mirrored plans occur throughout the development please see architectural plans for unit layout if material to your decision to purchase. Illustrations, renderings, vignettes, and marketing materials provided are an artist's concept and are intended as a general reference only, not to be relied upon as they are subject to change without prior notice. Please ask one of the helpful sales staff to reference the most recent set of architectural construction drawings for the most up to date dimensions, layouts, and other details. Please refer to disclosure statement for specific offering details. E. & O. E. Sales and Marketing provided by Fifth Avenue Real Estate Marketing Ltd. [www.fifthave.ca](http://www.fifthave.ca) 604-583-2212.

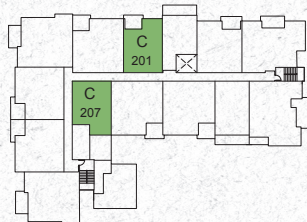


# PLAN C

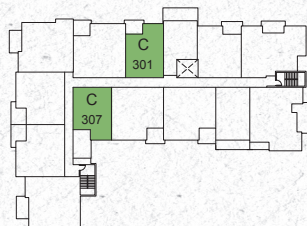
1 BED + DEN, 1 BATH  
618 sq ft.



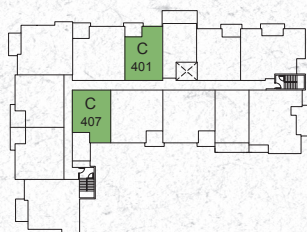
LEVEL 1



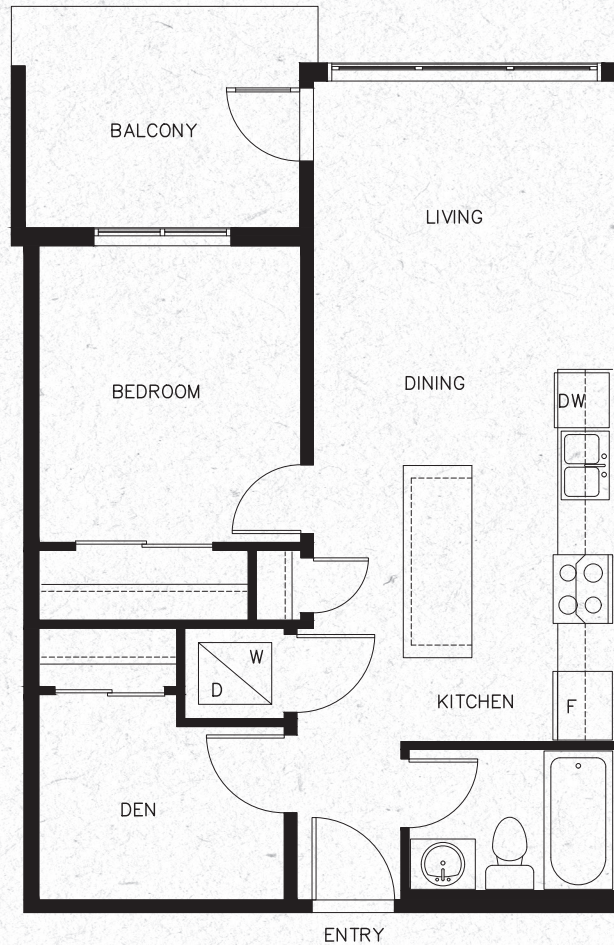
LEVEL 2



LEVEL 3



LEVEL 4

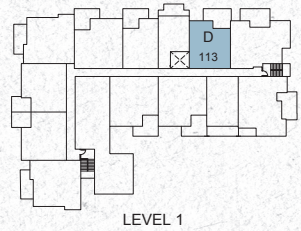


Balcony configurations may vary. Please see sales representative for further details. In our continuing effort to improve and maintain the high standard of the Westminster Plateau development, the developer reserves the right to modify or change plans, specifications, features and prices without notice. Materials may be substituted with equivalent or better at the developer's sole discretion. All dimensions and sizes are approximate and are based on architectural measurements. As reverse, flipped, and/or mirrored plans occur throughout the development please see architectural plans for unit layout if material to your decision to purchase. Illustrations, renderings, vignettes, and marketing materials provided are an artist's concept and are intended as a general reference only, not to be relied upon as they are subject to change without prior notice. Please ask one of the helpful sales staff to reference the most recent set of architectural construction drawings for the most up to date dimensions, layouts, and other details. Please refer to disclosure statement for specific offering details. E. & O. E. Sales and Marketing provided by Fifth Avenue Real Estate Marketing Ltd. [www.fifthave.ca](http://www.fifthave.ca) 604-583-2212.

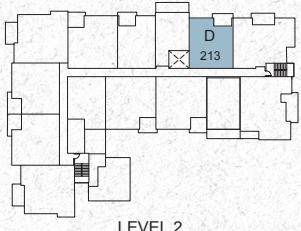


# PLAN D

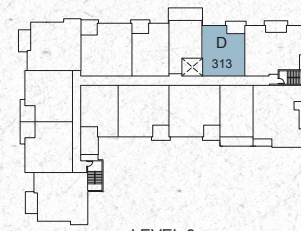
2 BED, 1 BATH  
676 sq. ft.



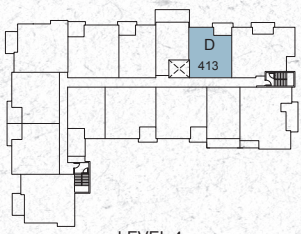
LEVEL 1



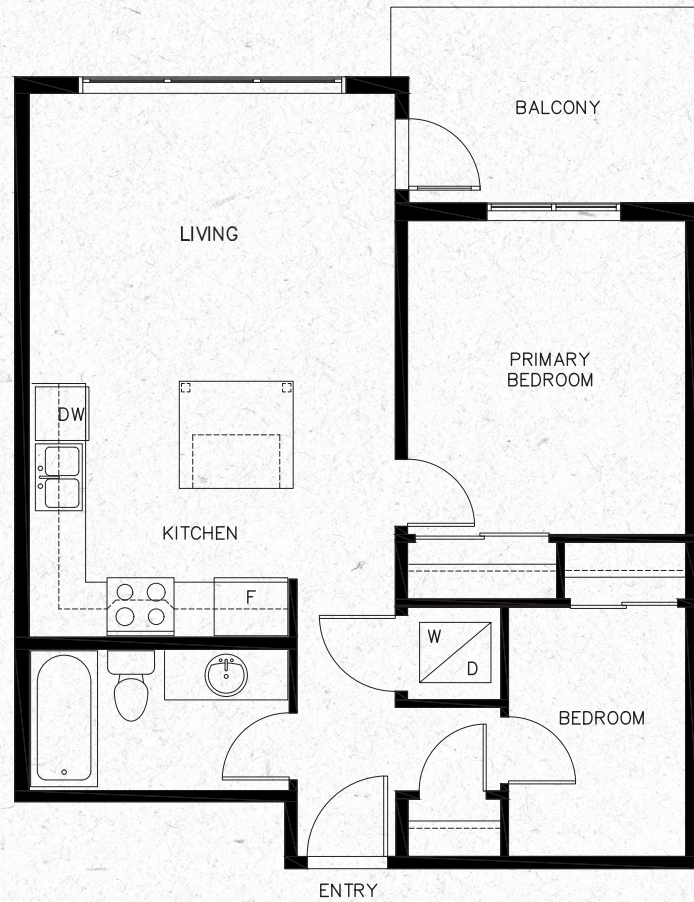
LEVEL 2



LEVEL 3



LEVEL 4

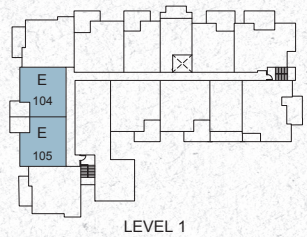


Balcony configurations may vary. Please see sales representative for further details. In our continuing effort to improve and maintain the high standard of the Westminster Plateau development, the developer reserves the right to modify or change plans, specifications, features and prices without notice. Materials may be substituted with equivalent or better at the developer's sole discretion. All dimensions and sizes are approximate and are based on architectural measurements. As reverse, flipped, and/or mirrored plans occur throughout the development please see architectural plans for unit layout if material to your decision to purchase. Illustrations, renderings, vignettes, and marketing materials provided are an artist's concept and are intended as a general reference only, not to be relied upon as they are subject to change without prior notice. Please ask one of the helpful sales staff to reference the most recent set of architectural construction drawings for the most up to date dimensions, layouts, and other details. Please refer to disclosure statement for specific offering details. E. & O. E. Sales and Marketing provided by Fifth Avenue Real Estate Marketing Ltd. [www.fifthave.ca](http://www.fifthave.ca) 604-583-2212.

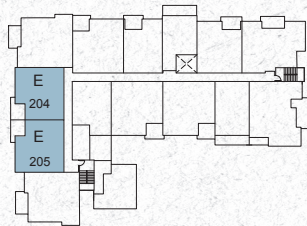


# PLAN E

2 BED, 2 BATH  
778 sq. ft.



LEVEL 1



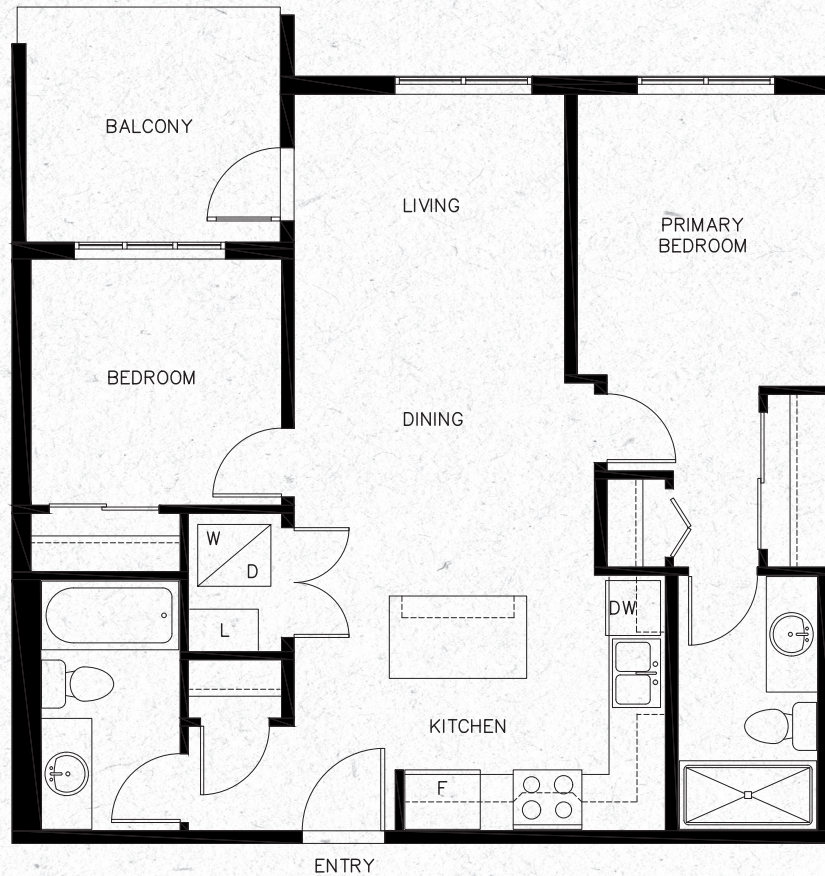
LEVEL 2



LEVEL 3



LEVEL 4

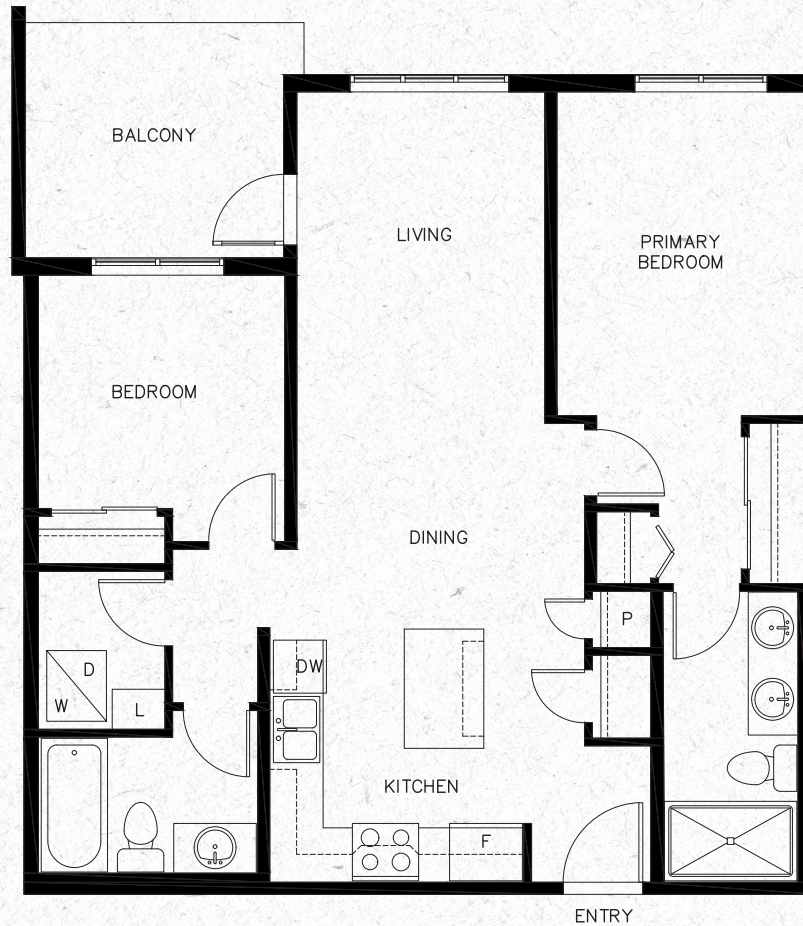
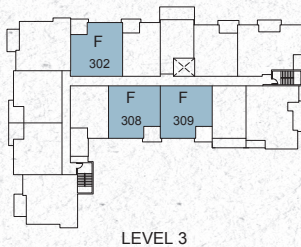
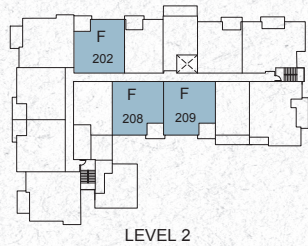
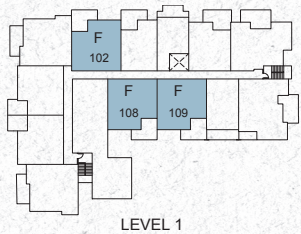


Balcony configurations may vary. Please see sales representative for further details. In our continuing effort to improve and maintain the high standard of the Westminster Plateau development, the developer reserves the right to modify or change plans, specifications, features and prices without notice. Materials may be substituted with equivalent or better at the developer's sole discretion. All dimensions and sizes are approximate and are based on architectural measurements. As reverse, flipped, and/or mirrored plans occur throughout the development please see architectural plans for unit layout if material to your decision to purchase. Illustrations, renderings, vignettes, and marketing materials provided are an artist's concept and are intended as a general reference only, not to be relied upon as they are subject to change without prior notice. Please ask one of the helpful sales staff to reference the most recent set of architectural construction drawings for the most up to date dimensions, layouts, and other details. Please refer to disclosure statement for specific offering details. E. & O. E. Sales and Marketing provided by Fifth Avenue Real Estate Marketing Ltd. [www.fifthave.ca](http://www.fifthave.ca) 604-583-2212.



# PLAN F

2 BED, 2 BATH  
857 sq. ft.

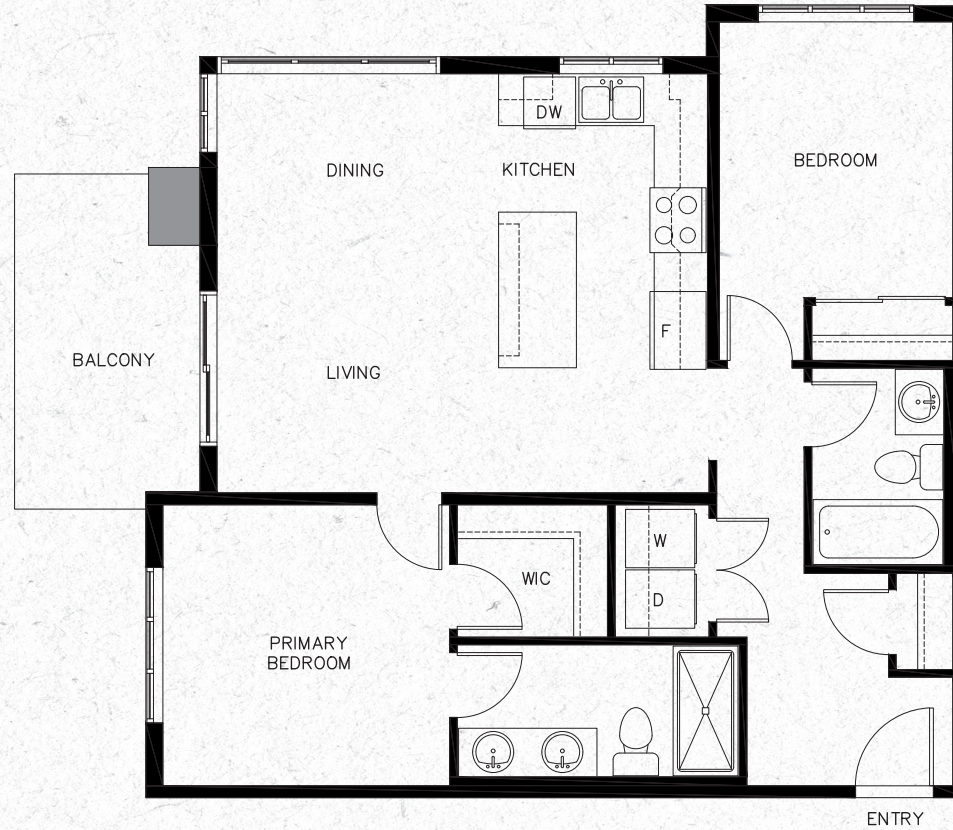
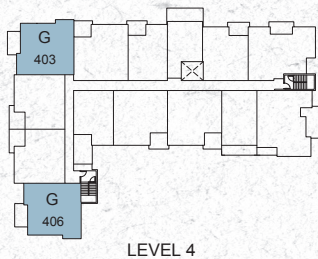
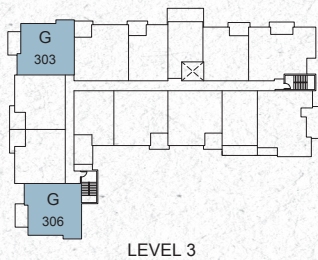
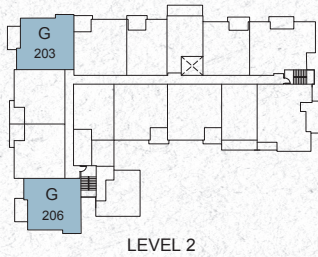
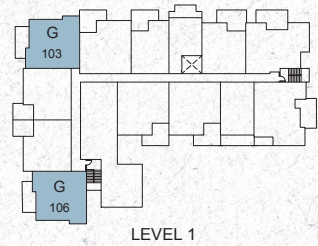


Balcony configurations may vary. Please see sales representative for further details. In our continuing effort to improve and maintain the high standard of the Westminster Plateau development, the developer reserves the right to modify or change plans, specifications, features and prices without notice. Materials may be substituted with equivalent or better at the developer's sole discretion. All dimensions and sizes are approximate and are based on architectural measurements. As reverse, flipped, and/or mirrored plans occur throughout the development please see architectural plans for unit layout if material to your decision to purchase. Illustrations, renderings, vignettes, and marketing materials provided are an artist's concept and are intended as a general reference only, not to be relied upon as they are subject to change without prior notice. Please ask one of the helpful sales staff to reference the most recent set of architectural construction drawings for the most up to date dimensions, layouts, and other details. Please refer to disclosure statement for specific offering details. E. & O. E. Sales and Marketing provided by Fifth Avenue Real Estate Marketing Ltd. [www.fifthave.ca](http://www.fifthave.ca) 604-583-2212.



# PLAN G

2 BED, 2 BATH  
883 sq ft.

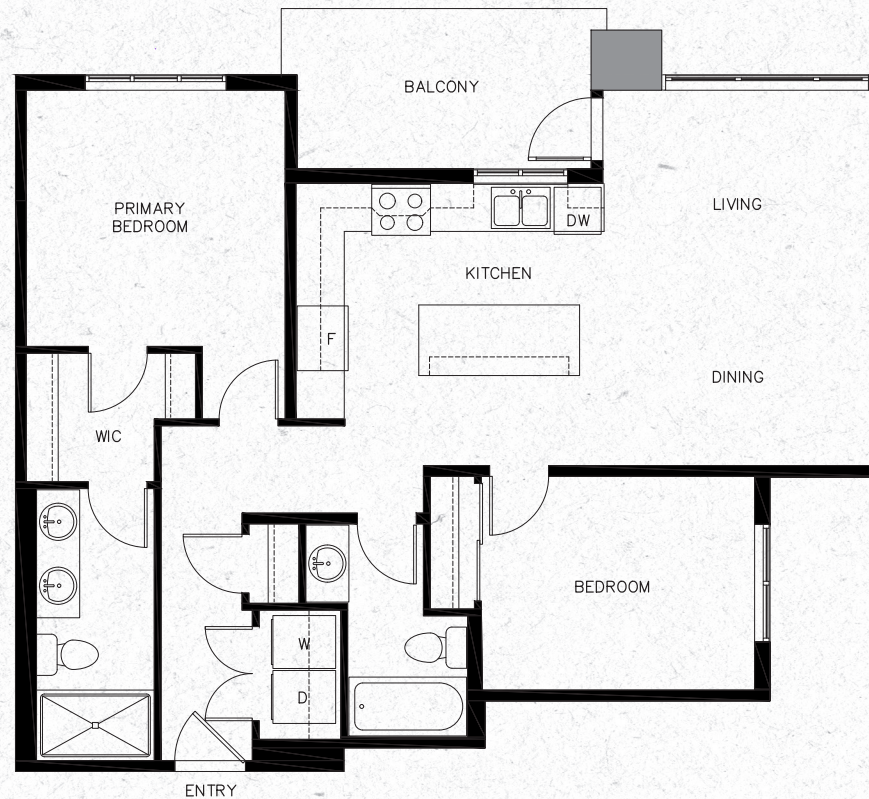
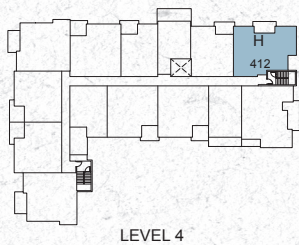
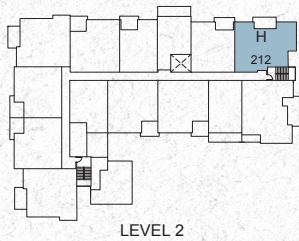
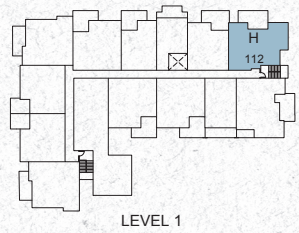


Balcony configurations may vary. Please see sales representative for further details. In our continuing effort to improve and maintain the high standard of the Westminster Plateau development, the developer reserves the right to modify or change plans, specifications, features and prices without notice. Materials may be substituted with equivalent or better at the developer's sole discretion. All dimensions and sizes are approximate and are based on architectural measurements. As reverse, flipped, and/or mirrored plans occur throughout the development please see architectural plans for unit layout if material to your decision to purchase. Illustrations, renderings, vignettes, and marketing materials provided are an artist's concept and are intended as a general reference only, not to be relied upon as they are subject to change without prior notice. Please ask one of the helpful sales staff to reference the most recent set of architectural construction drawings for the most up to date dimensions, layouts, and other details. Please refer to disclosure statement for specific offering details. E. & O. E. Sales and Marketing provided by Fifth Avenue Real Estate Marketing Ltd. [www.fifthave.ca](http://www.fifthave.ca) 604-583-2212.



# PLAN H

2 BED, 2 BATH  
937 sq. ft.

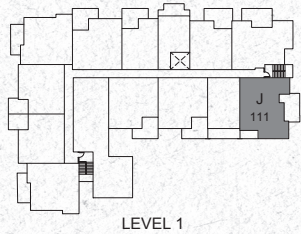


Balcony configurations may vary. Please see sales representative for further details. In our continuing effort to improve and maintain the high standard of the Westminster Plateau development, the developer reserves the right to modify or change plans, specifications, features and prices without notice. Materials may be substituted with equivalent or better at the developer's sole discretion. All dimensions and sizes are approximate and are based on architectural measurements. As reverse, flipped, and/or mirrored plans occur throughout the development please see architectural plans for unit layout if material to your decision to purchase. Illustrations, renderings, vignettes, and marketing materials provided are an artist's concept and are intended as a general reference only, not to be relied upon as they are subject to change without prior notice. Please ask one of the helpful sales staff to reference the most recent set of architectural construction drawings for the most up to date dimensions, layouts, and other details. Please refer to disclosure statement for specific offering details. E. & O. E. Sales and Marketing provided by Fifth Avenue Real Estate Marketing Ltd. [www.fifthave.ca](http://www.fifthave.ca) 604-583-2212.

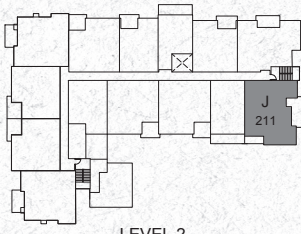


# PLAN J

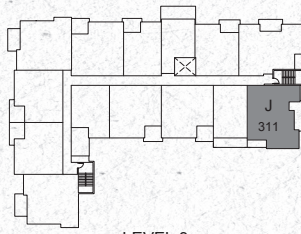
2 BED + DEN, 2 BATH  
989 sq ft.



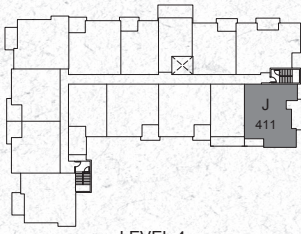
LEVEL 1



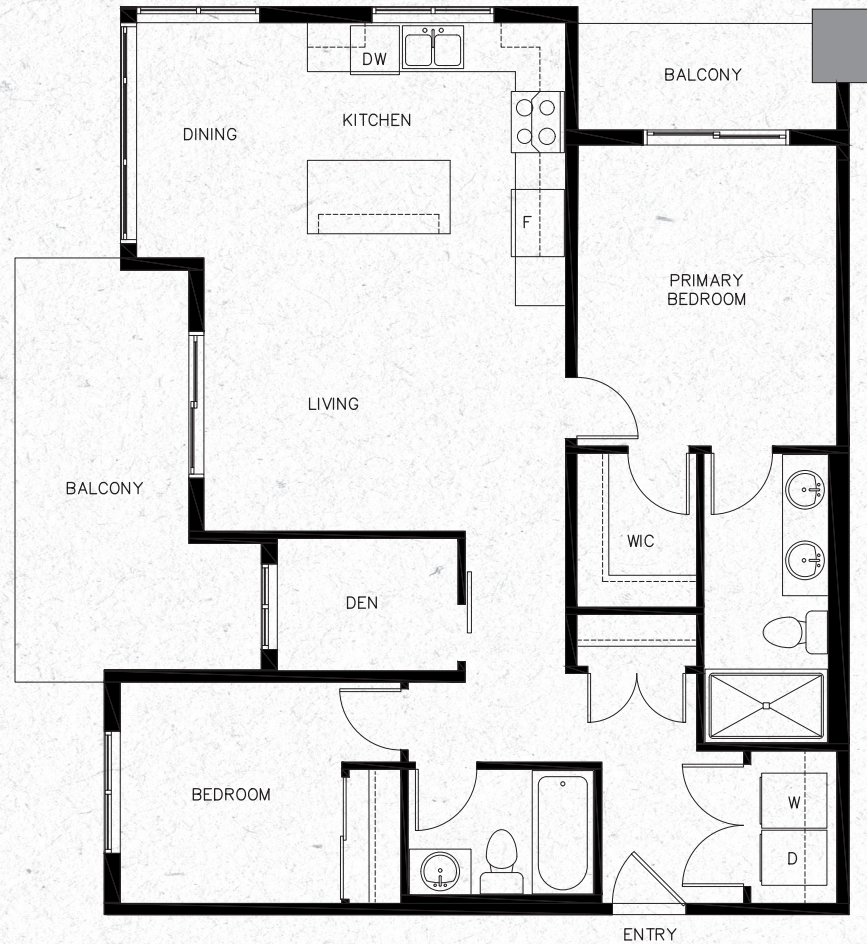
LEVEL 2



LEVEL 3



LEVEL 4



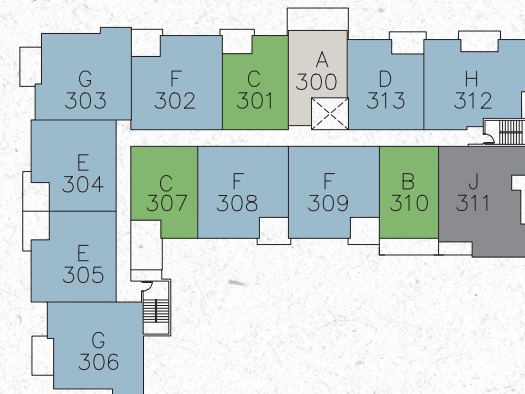
Balcony configurations may vary. Please see sales representative for further details. In our continuing effort to improve and maintain the high standard of the Westminster Plateau development, the developer reserves the right to modify or change plans, specifications, features and prices without notice. Materials may be substituted with equivalent or better at the developer's sole discretion. All dimensions and sizes are approximate and are based on architectural measurements. As reverse, flipped, and/or mirrored plans occur throughout the development please see architectural plans for unit layout if material to your decision to purchase. Illustrations, renderings, vignettes, and marketing materials provided are an artist's concept and are intended as a general reference only, not to be relied upon as they are subject to change without prior notice. Please ask one of the helpful sales staff to reference the most recent set of architectural construction drawings for the most up to date dimensions, layouts, and other details. Please refer to disclosure statement for specific offering details. E. & O. E. Sales and Marketing provided by Fifth Avenue Real Estate Marketing Ltd. [www.fifthave.ca](http://www.fifthave.ca) 604-583-2212.



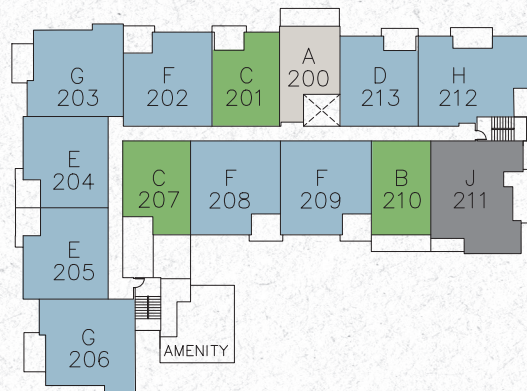
# KEYPLAN



LEVEL 1



LEVEL 3



LEVEL 2



LEVEL 4



Balcony configurations may vary. Please see sales representative for further details. In our continuing effort to improve and maintain the high standard of the Westminster Plateau development, the developer reserves the right to modify or change plans, specifications, features and prices without notice. Materials may be substituted with equivalent or better at the developer's sole discretion. All dimensions and sizes are approximate and are based on architectural measurements. As reverse, flipped, and/or mirrored plans occur throughout the development please see architectural plans for unit layout if material to your decision to purchase. Illustrations, renderings, vignettes, and marketing materials provided are an artist's concept and are intended as a general reference only, not to be relied upon as they are subject to change without prior notice. Please ask one of the helpful sales staff to reference the most recent set of architectural construction drawings for the most up to date dimensions, layouts, and other details. Please refer to disclosure statement for specific offering details. E. & O. E. Sales and Marketing provided by Fifth Avenue Real Estate Marketing Ltd. [www.fifthave.ca](http://www.fifthave.ca) 604-583-2212.