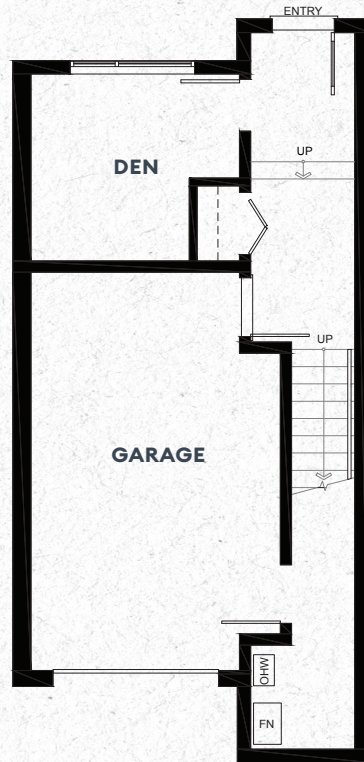


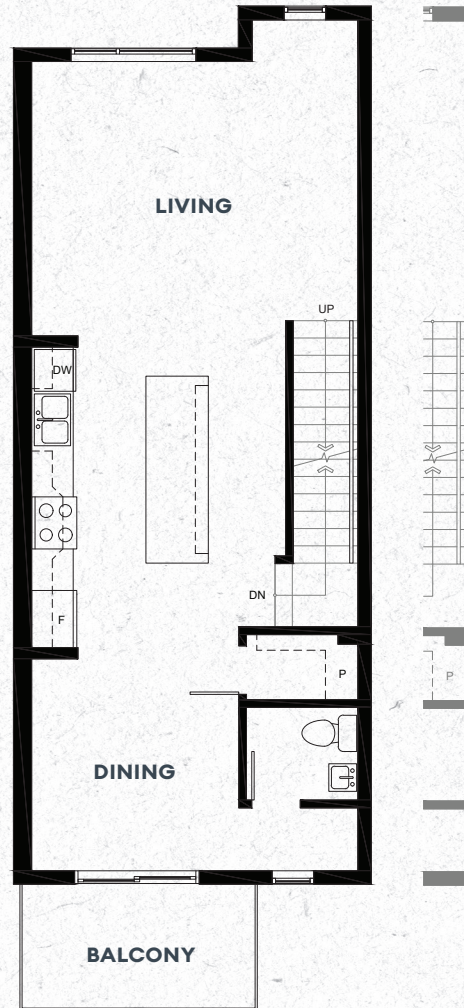
# PLAN A

3 BED + DEN, 2.5 BATH  
1,616 sq ft.

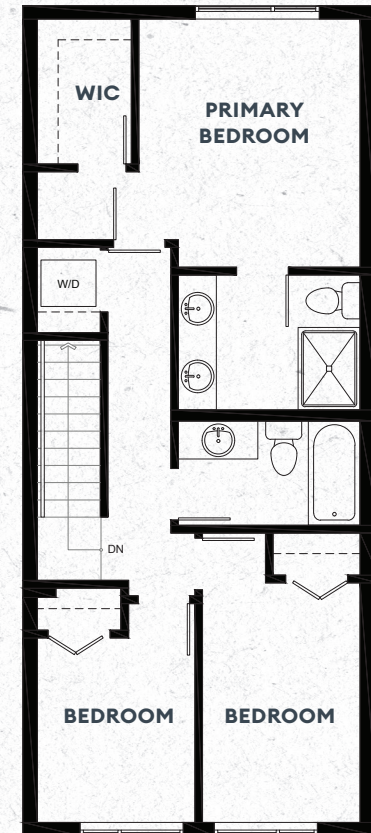
**WESTMINSTER**  
PLATEAU



LOWER



MAIN



UPPER

Please note units 18,19,20 & 21 all feature sunken living rooms. Please ask our Sales Team for more information.

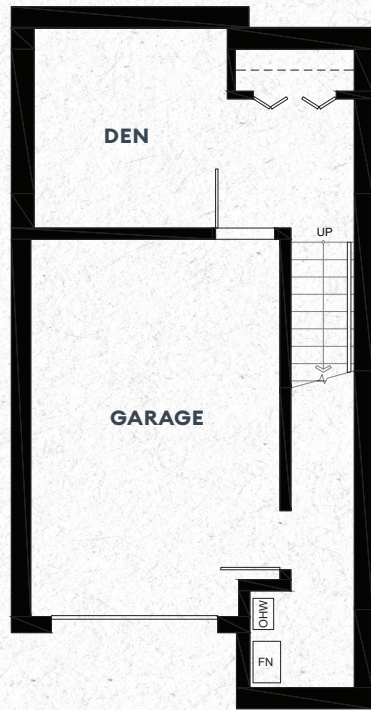
In our continuing effort to improve and maintain the high standard of the Westminster Plateau development, the developer reserves the right to modify or change plans, specifications, features and prices without notice. Materials may be substituted with equivalent or better at the developer's sole discretion. All dimensions and sizes are approximate and are based on Architectural measurements. As reverse and/or mirrored plans occur throughout the development, please see architectural plans. Renderings are an artist's conception and are intended as a general reference only. Please refer to disclosure statement for specific offering details. E.&O.E. Sales and Marketing provided by Fifth Avenue Real Estate Marketing Ltd. 604-583-2212



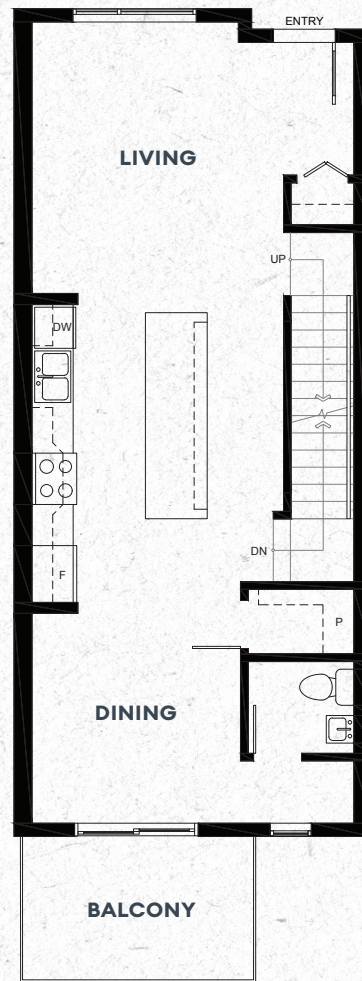
# PLAN B

3 BED + DEN, 2.5 BATH  
1,570 - 1,612 sq ft.

WESTMINSTER  
PLATEAU



LOWER



MAIN



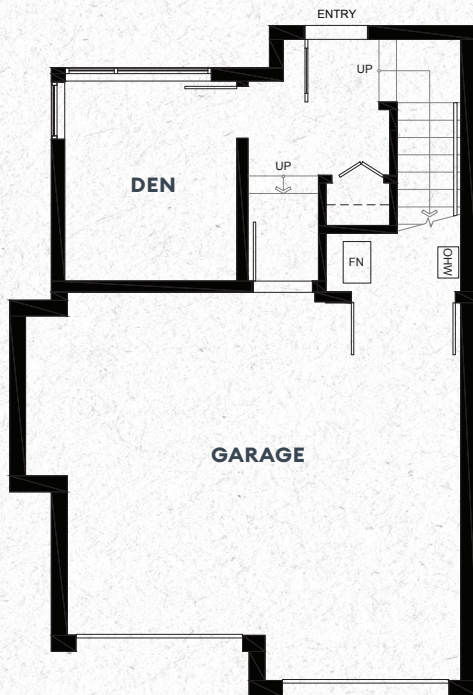
UPPER



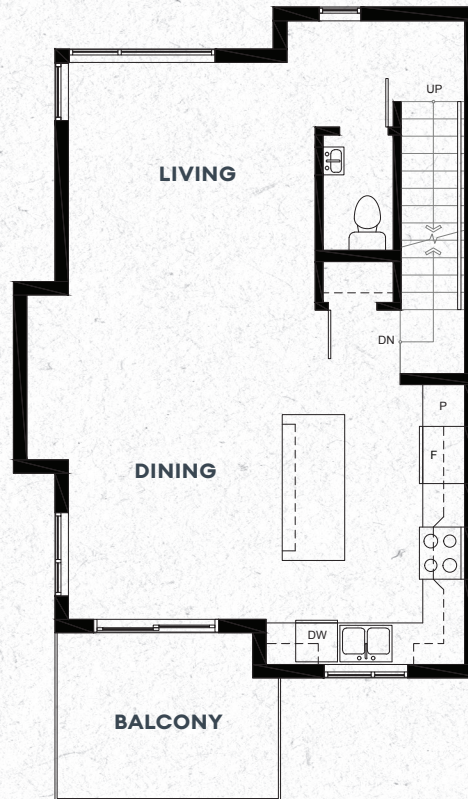
# PLAN D

3 BED + DEN, 2.5 BATH  
1,478 sq ft.

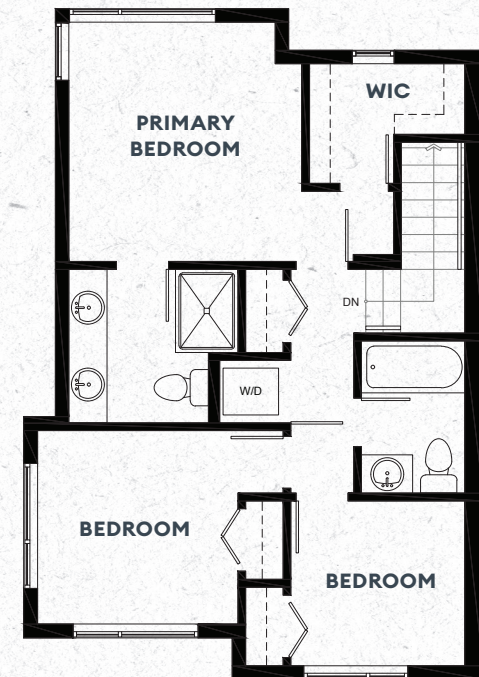
WESTMINSTER  
PLATEAU



LOWER



MAIN



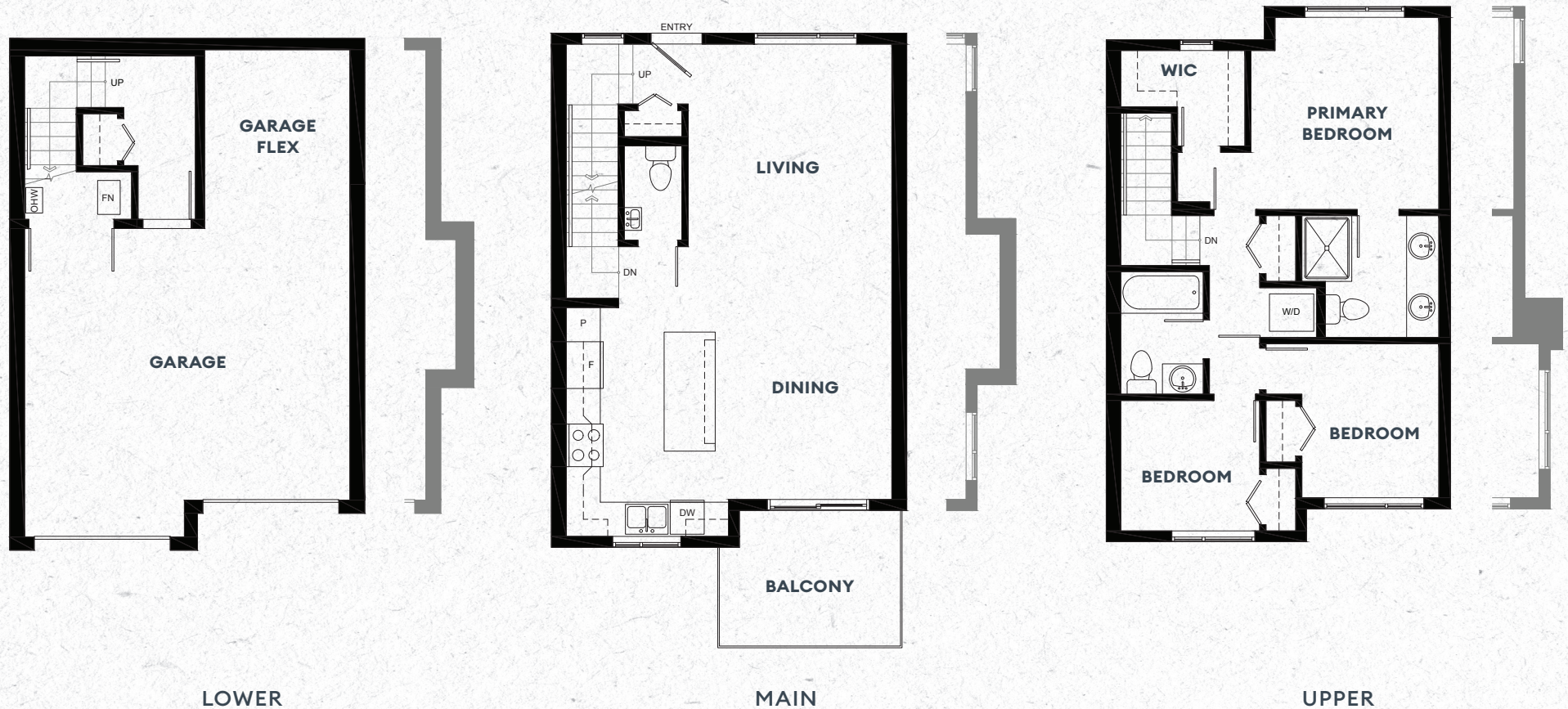
UPPER



# PLAN E

3 BED, 2.5 BATH  
1,301 - 1,333 sq ft.

WESTMINSTER  
PLATEAU



In our continuing effort to improve and maintain the high standard of the Westminster Plateau development, the developer reserves the right to modify or change plans, specifications, features and prices without notice. Materials may be substituted with equivalent or better at the developer's sole discretion. All dimensions and sizes are approximate and are based on Architectural measurements. As reverse and/or mirrored plans occur throughout the development, please see architectural plans. Renderings are an artist's conception and are intended as a general reference only. Please refer to disclosure statement for specific offering details. E.&O.E. Sales and Marketing provided by Fifth Avenue Real Estate Marketing Ltd. 604-583-2212



# SITE MAP



Renderings and imagery are an artist's perception and intended as a general reference only. Not to be fully relied upon. Specifications may be substituted with equivalent or better at the developer's sole discretion. E.&O.E. Sales and Marketing provided by Fifth Avenue Real Estate Marketing Ltd. 604-583-2212